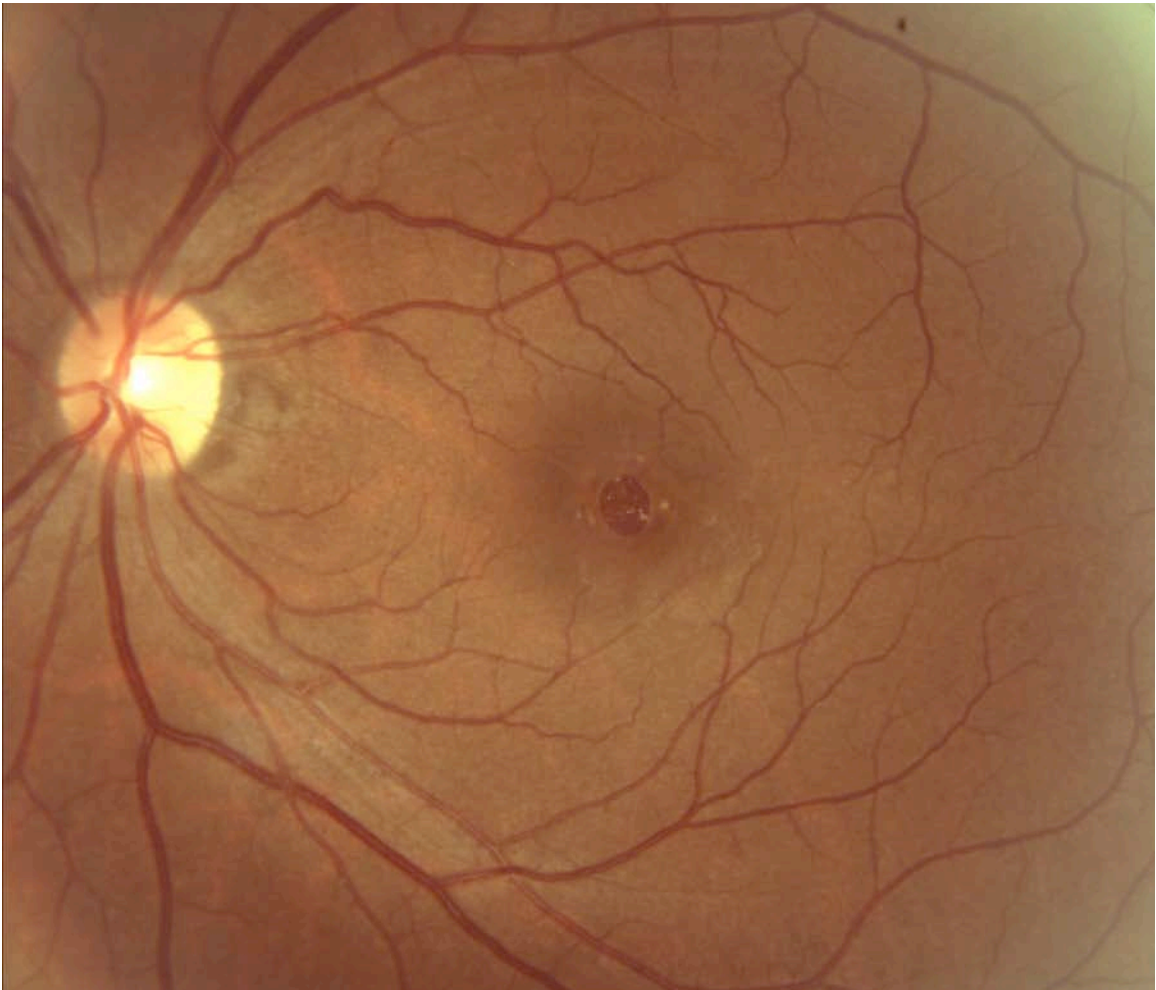


## Macular Hole:

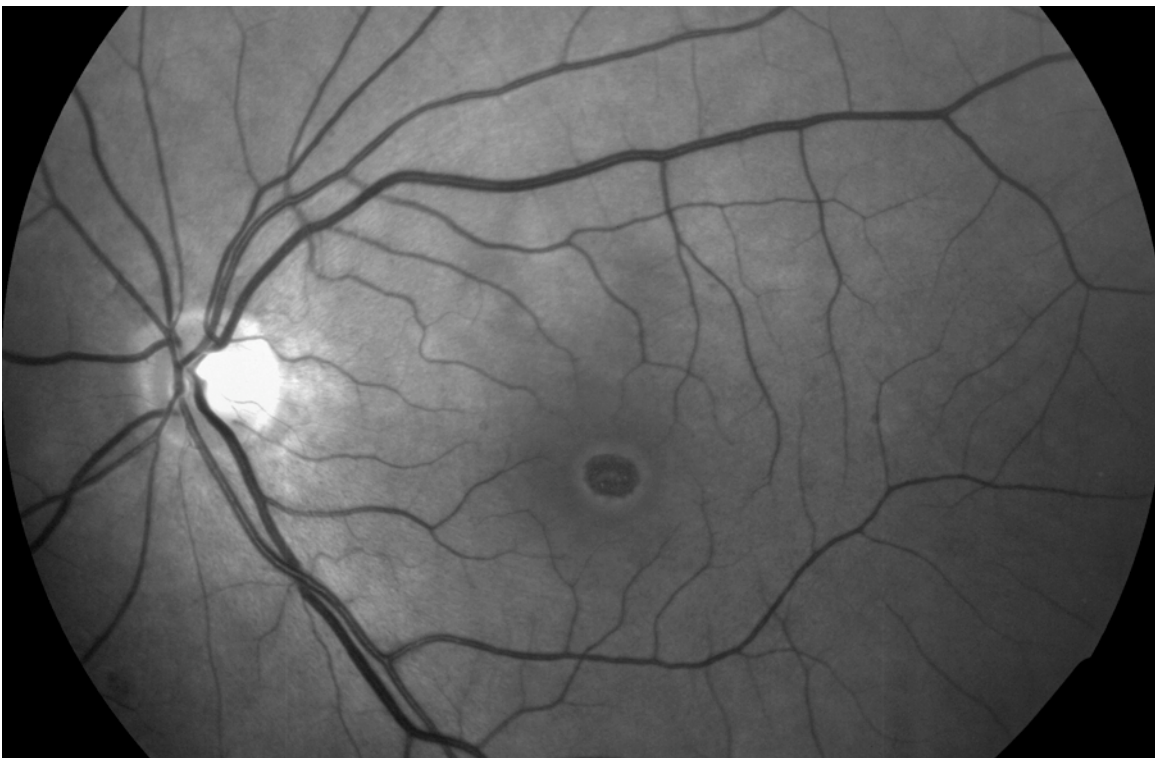
The macula is the central area of the retina that is responsible for seeing fine details. Attached firmly to the retina is the vitreous gel that fills the center of the eye. As a person ages, the vitreous shrinks and contracts which causes tractional forces on the macula. In most cases the vitreous gel separates with no adverse side effects, but, in some cases the vitreous is firmly attached to the macula. The tractional forces can cause a small hole in the macula, which is known as a macular hole. Symptoms of a macular hole include: loss of central vision and distortion.

Repair of a macular hole involves vitrectomy surgery. This operation is done to remove the vitreous jelly of the eye that is causing traction to the macula. During the surgery, the surgeon may also remove additional tissue causing traction and preventing the hole from closing. Also, during the surgery, the eye will be filled with a gas bubble that will stay in the eye and dissolve over time; the duration can vary depending on the type of gas used to fill the eye. After surgery, the patient will have to be in a face down position for four to seven days. Following the positioning requirements is important to maximize the chance of success of the surgery. When in a face down position, the bubble will press against the macular hole aiding it in closure. There is rental equipment available to assist with face down positioning.

It is very important to see your ophthalmologist at the first signs of vision change, since the macular hole surgery has the best results when the procedure is done within 6 months to one year after the formation of the hole.



*The macula is the dark area in the center of the photo. Within the center of this area is the macular hole.*



*As seen in this red free image, the macular hole is located in the center of the retina.*